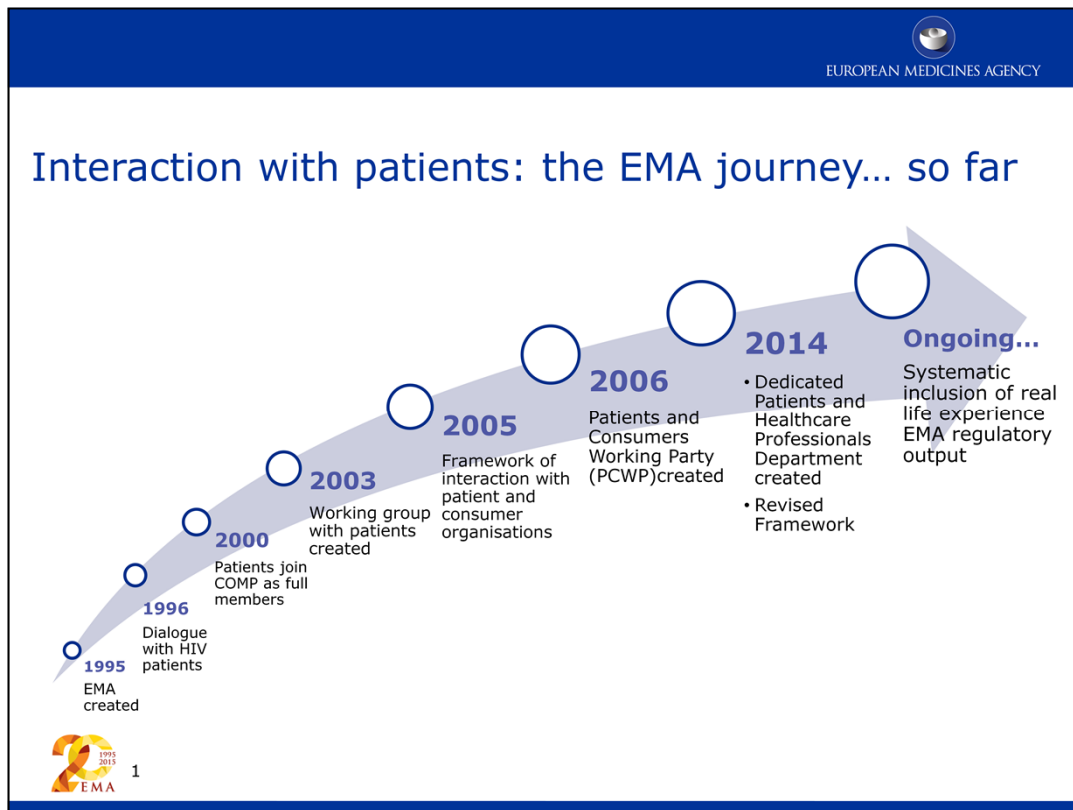




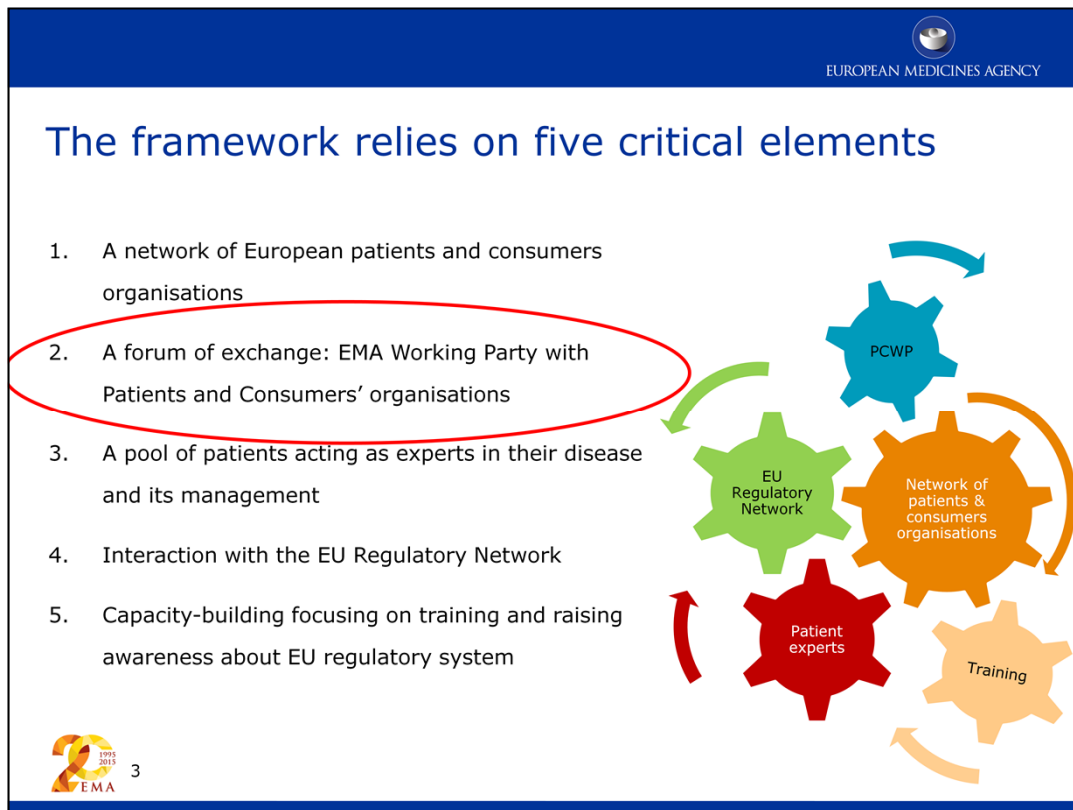
In this video, we are going to tell you about the Patients' and Consumers' Working Party at the European Medicines Agency



Although the Agency has been in dialogue with patients and consumers since it opened in 1995, this collaboration was formalised with the adoption of the Framework of Interaction between Patients' and Consumers' Organisations and the Agency,

This was closely followed in 2006 with the establishment of the Patients' and Consumers' Working Party

And today 20 years later, we now have in place, methods to involve patients along the whole medicines evaluation lifecycle.



The aforementioned Framework of Interaction with Patients and Consumers really relies on five key elements.

It needs to have a wide network of European patient and consumer organisations, it needs to have a platform for exchange of information with these organisations, it also needs to have access to a pool of patients who act as experts in their disease area.

This all needs to work together in collaboration with the wider EU regulatory network and of course it is important to ensure that we provide capacity-building, training and raising awareness for patients on all of these aspects.


We will now focus on the working party with Patients' and Consumers' Organisations, the PCWP



Patients' and Consumers' Working Party (PCWP)



Here we can see a photo of some of the members of the PCWP


 EUROPEAN MEDICINES AGENCY

Patients and Consumers Working Party (PCWP)

The PCWP plays a key role in the interaction between the EMA and patient organisations. Platform for dialogue and exchange on relevant issues concerning medicines; The PCWP provides recommendations to the EMA and its Human Scientific Committees on all matters of direct or indirect interest to patients and consumers

- 19 members and 16 alternates representing Patients and Consumer Organisations;
- 6 members from the EMA Scientific Committees;
- 1 member from the EMA secretariat;
- Observers from the Management Board





Photo credit: Roberto De Lisa (EMA)

Four meetings held annually; one plenary, one with all 'eligible' organisations, two joint with the Healthcare Professionals' Working Party (HCPWP) and a one-day training session.


5


This working party really plays a key role in the Agency's interaction with patients' organisations, it is the area where they can exchange information and talk about issues of common interest.

The PCWP helps provide recommendations to the EMA and its scientific committees on all aspects related to patients and medicines.

The members of the PCWP represent the organisations but also it has representatives from the scientific committees and additionally observers from the EMA Management Board and the European Commission.

The working party meets 4 times a year, they have some plenary meetings, but also some meetings are jointly held with the Healthcare Professionals working party as many of the topics are of common interest.


Also each year there is a meeting held with all of the other EMA eligible organisations and this is followed by a one-day training session



EUROPEAN MEDICINES AGENCY

Which patient organisations?

- Any organisation representing EU patients or consumers may express an interest to work with the Agency, however they must meet the defined **eligibility criteria** (application form on the [EMA website](#))
- List of eligible patients & consumers organisations published on the EMA website
- Now have large network of EU patient organisations and individuals interested and registered to work with the EMA



6

So which organisations do we work with?

In fact, any organisation representing EU patients or consumers can express an interest to work with the Agency and as long as they meet defined eligibility criteria, then the EMA very much welcomes their participation.

The list of these eligible patient and consumer organisations can be found on our website and we now have large network of these organisations across the European Union.



Here we can see some of the organisations that we regularly work with,

Some are disease-specific, some are more general, some may have individuals as members and some may have organisations as members but the one thing that they all have in common is that they have a specific interest in medicines for patients.

EUROPEAN MEDICINES AGENCY

Contact



Nathalie Bere
Patient relations coordinator
Stakeholder and Communication Division
nathalie.bere@ema.europa.eu
www.ema.europa.eu
PCWPsecretariat@ema.europa.eu

European Medicines Agency
30 Churchill Place • Canary Wharf • London E14 5EU • United Kingdom
Telephone +44 (0)20 3660 8452 **Facsimile** +44 (0)20 3660 5550
Send a question via our website www.ema.europa.eu/contact

Follow us on  **@EMA_News**

 8 Involvement of Patients at EMA

If you would like to learn more about the Patients' and Consumers' Working Party at the EMA or any other aspects of patient involvement, please don't hesitate to visit our website: www.ema.europa.eu